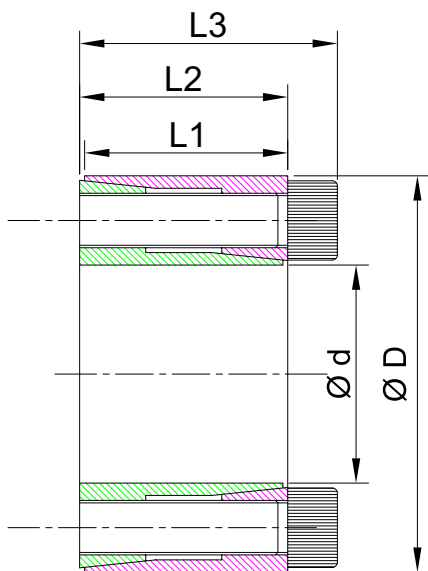


C-1017.1

**SELF CENTERING
HIGH TORQUES**



Dimensions [mm]					SCREWS			SPECIFICATION			
d	D	L1	L2	L3	No.	SIZE	Ts Nm	T max Nm	Fax kN	Ps N/mm ²	Ph N/mm ²
12	22	12.5	13	15.5	4	M 2.5	1.2	21	3	91	50
14	26	16.5	17	20	4	M 3	2.2	40	6	97	52
15	28	16.5	17	20	4	M 3	2.2	43	6	90	48
16	32	16.5	17	21	4	M 4	4.9	80	10	149	74
17	35	20.5	21	25	4	M 4	4.9	85	10	112	54
18	35	20.5	21	25	4	M 4	4.9	90	10	106	54
19	35	20.5	21	25	4	M 4	4.9	95	10	100	54
20	38	20.5	21	26	4	M 5	10	164	16	155	82
22	40	20.5	21	26	4	M 5	10	180	16	141	78
24	47	25	26	32	4	M 6	17	278	23	146	75
25	47	25	26	32	4	M 6	17	289	23	140	75
28	50	25	26	32	6	M 6	17	486	35	188	105
30	55	25	26	32	6	M 6	17	520	35	175	96
32	55	25	26	32	6	M 6	17	555	35	164	96
35	60	30	31	37	6	M 6	17	810	46	173	101
38	65	30	31	37	8	M 6	17	879	46	169	93
40	65	30	31	37	8	M 6	17	925	46	151	93
45	75	35	36	44	8	M 8	41	1442	64	159	95
50	80	35	36	44	8	M 8	41	2137	85	191	119

- **Tmax** Maximum Transmitting torque (Fax = 0) **Nm**
- **Ts** Screw tightening torque **Nm**
- **Fax** Axial Force (Tmax = 0) **kN**
- **Ps** Specific Pressure on shaft **N/mm²**
- **Ph** Specific Pressure on hub **N/mm²**

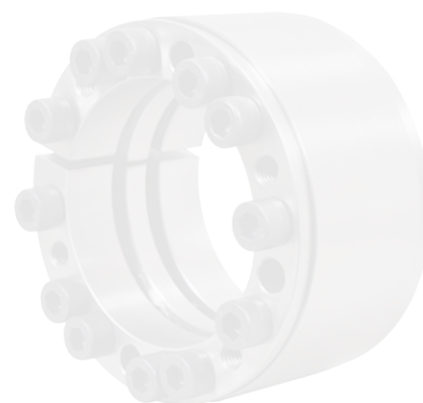
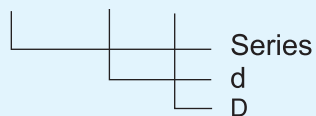
Instruction:

- 1 Surface finish require for shaft and hub bore $Ra \leq 3.2 \mu m$
- 2 Recommend mounting tolerance for shaft h8 for hub H8
- 3 Do not use lubricants, Molykote molybdenum disulfide based oil.

Order Example

for shaft with $d = 40$ mm and hub with $D = 65$ mm and transmissible torque value lower than or equal to 925 Nm Order

CANTO-LOCK C-1017.1 - 40 x 65



For more dimensions & customize Solutions Please contact to our Engineers
We reserve the right carry out modifications at any time in the interest of technical progress



www.cantoengineering.com
An ISO Certified Company

CANTO ENGINEERING COMPANY

Lane No. 2, Tiranga Colony, A/P Kabnoor, Ichalkaranji 416 115
State: Maharashtra, INDIA

Cell. 9511839995 | E-mail : sales@cantoengineering.in

Cell. 9860765945 | E-mail : arun.patil@cantoengineering.in